

ACHIEVE

WINTER 2026


CHRISTOPHER HOUSE
LEARN DREAM ACHIEVE

WHAT'S INSIDE:

Hear from our Newest
Board Members

Learn about our Staff
Development Program

Meet our
Alumni

A LETTER FROM OUR CEO

In 2024, Christopher House committed to a three-year strategic plan (FY24–FY26) grounded in three core priorities: highest student achievement, becoming the best place to work, and investing in equity. As we reflect on the past year, I am deeply proud of the progress our community has made together. From gains in kindergarten readiness and increased staff retention, to expanded professional learning and a stronger, more diversified funding base. This work reflects the care, dedication, and belief that every child and family deserves the opportunity to thrive.

At the same time, this year has brought real challenges. Like many organizations across the country, Christopher House has navigated an increasingly uncertain funding landscape. As a result of federal funding cuts, we made the difficult decision to pause programming at our Logan Square campus for the 2025–2026 program year. While this was not an easy choice, it reflects our commitment to equity and quality—ensuring that we have the resources needed to deliver strong, consistent programming. We are actively planning what comes next and exploring thoughtful ways to continue supporting the Logan Square community in the future.

This past year also demanded that we show up for our families and staff in new and deeply human ways. Many of the families we serve—and many members of our team—proudly identify as immigrants and racial minorities who continue to be impacted by the presence of ICE, and we are working together to navigate the fear and trauma that this brings. Christopher House has strengthened safety and emergency protocols, convened cross-department preparedness teams, and expanded access to legal resources, food assistance, and emergency financial support. We also prioritized staff well-being through peace circles and trauma-informed professional development, ensuring our team felt supported as they cared for children and families navigating fear and uncertainty.

Looking ahead, we are entering our 120th year of impact with renewed purpose. Alongside our existing strategic priorities, we have added a fourth pillar: community impact—a commitment to supporting families not only within our walls, but throughout the neighborhoods we serve. In that regard, we are excited to share that Christopher House has welcomed Concordia Place as a Head Start partner, expanding Head Start programming to their centers. We will also soon begin working alongside them as a new partner in the Chicago Benchmarking Collaborative. By sharing our expertise and leadership in early childhood education, we are disseminating best practices and helping strengthen outcomes for the most vulnerable children and families across Chicago.

This past year's responsive work—both internally and amid external challenges—has been possible because of Christopher House's two-generation model. By combining a continuum of education with immersive, destigmatized family supports, we are uniquely equipped to support scholars and families academically, socially, and emotionally. This approach has guided us for more than a century and will continue to shape our mission.

Thank you for standing with us as we move forward—grounded in purpose, responsive to our community, and deeply committed to what's possible for children and families.



Warmest Regards,

Julie Dakers, CEO

OUR MISSION

Christopher House creates opportunity and advances equity for scholars and families through a continuum of personalized, high-quality education with immersive family supports, starting at birth.

OUR VALUES

- ★ Commitment to Excellence
- ★ Achievement and Perseverance
- ★ Respect and Compassion
- ★ Equity

OUR BELIEFS

CHILDREN AND FAMILIES THRIVE WHEN:

- ★ They have access to a high-quality education
- ★ Education begins at birth, with parents as the first teacher, and continues through life
- ★ Parents have high standards and set high expectations for their children and themselves
- ★ Professionally trained teachers use strength-based instruction and know their students as individuals
- ★ Parents support their children financially and emotionally
- ★ Evaluations and program adjustments are data driven
- ★ Education includes developing perseverance and social intelligence
- ★ Parents and teachers work together to continuously improve programs



ONE CONTINUUM, ONE COMMUNITY: Supporting Scholars Through the Kindergarten Transition

At Christopher House, kindergarten readiness begins long before the first day of school. Through intentional collaboration between our Early Childhood and Elementary School teams, preschool scholars are prepared academically, socially, and emotionally for a confident transition into kindergarten.

This work began in 2013 with the opening of the James and Jean Stewart campus, when leaders recognized the power of the continuum model to better align programs. *“We recognized the power that the model held to intentionally collaborate and engage in ongoing dialogue about how to best set our preschoolers up for success in kindergarten and beyond,”* shared Sarah Collentine, Director of Early Childhood. That collaboration led to the creation of the Kindergarten Readiness Matrix, which aligns early learning objectives with kindergarten expectations and continues to guide instruction today.

Over time, collaboration expanded to include shared professional development, data analysis, and co-planned experiences for scholars. *“Teachers from both preschool and kindergarten meet during the year to learn more about trends, patterns, and data in order to guide where students may need more support,”* said Cintia Bello-Ortiz, Early Childhood Site Director.

As the school year progresses, preschool and kindergarten teachers work together to design transition activities, including shared studies that introduce scholars to their future classrooms and teachers. Many students also participate in Christopher House's Summer Bridge Program, which provides targeted academic and social-emotional support. *“Students get to experience their potential kindergarten classroom at least two to three*

times a week,”

Cintia noted, helping build familiarity and confidence.

The impact is evident when scholars enter kindergarten.

According to Elementary School Instructional Leadership, incoming students show *“familiarity and comfortability with kinder teachers and classroom layout.”* Teachers also report stronger readiness skills, including independent functioning, following multi-step directions, and emotional regulation during instruction. Last year, we experienced a 37% year-over-year increase in overall kindergarten readiness, with 95% of preschool scholars scoring kindergarten ready in the social emotional learning domain and 95% in the cognitive.

Families benefit as well, feeling more at ease during this major transition. *“Having the collaboration between preschool and kindergarten has allowed students and their families to feel comfortable in their transition,”* Cintia shared.

This intentional alignment supports Christopher House's long-term vision for a seamless educational continuum. *“When kindergarten teachers are able to check in with the child's preschool teacher to discuss how best to support the child, the teachers and children benefit,”* Sarah said. By working together across programs, Christopher House ensures scholars are supported every step of the way—ready for kindergarten and beyond.



From Supported Parent to Christopher House Team Member:

Astrid's Story

When Astrid came to Christopher House in 2019, she was 20 years old, pregnant with her first child, and facing profound uncertainty. As the pandemic began and immigration restrictions separated her from her husband, Astrid found herself overwhelmed during one of the most vulnerable moments of her life.

Her journey with Christopher House started through the doula program, after she spotted a pamphlet at a prenatal appointment. From childbirth preparation to hospital support during her daughter's birth, Astrid felt cared for from the start. She later transitioned into home visits with parent educators—especially Ms. Jillian, whose guidance became a constant source of stability.

During the height of the pandemic, Christopher House supported Astrid and her daughter with regular home visits, developmental guidance, and essential resources such as diapers, clothing, books, and formula. Just as importantly, Astrid was connected to therapy during a period of depression. *“Even though I wasn't a single mother, the circumstances made me feel like one at times,”* she shared. *“Christopher House gave me stability, knowledge, and encouragement when I needed it most.”*

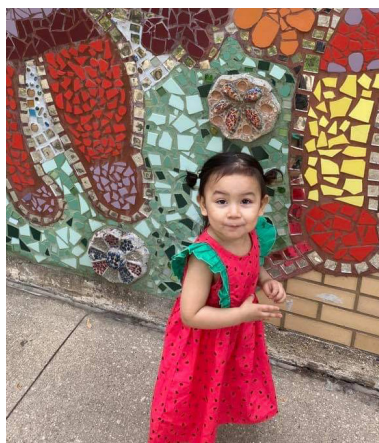
As her daughter grew, so did Astrid's connection to Christopher House. Through Early Head Start, food pantry support, food therapy, and ongoing family resources, Christopher House became more than a set of services—it became a community. *“From age 20 to now, 27, Christopher House has been a constant pillar in my life,”* Astrid said.

When her family became more stable, Astrid wanted to give back. She joined the Christopher House team as a kitchen aide at the Stewart location, where she now takes pride in caring for children through something as simple—and meaningful—as a meal. *“It's more than just food,”* she said. *“It's comfort, care, and knowing I'm helping children feel safe.”*

Recently, Astrid completed her Child Development Associate (CDA) credential as part of the Fall 2025 cohort—one of her proudest accomplishments. With support from Christopher House, including access to materials and a laptop, she balanced work, parenting, and an intensive 12-week course. Earning her CDA reignited her confidence and her dreams of becoming a teacher—and someday, a pediatrician.

Reflecting on her journey, Astrid credits the many Christopher House staff who supported her along the way. *“Christopher House didn't just offer services,”* she shared. *“They offered connection, respect, and a sense of family.”*

Today, Astrid's daughter is thriving in first grade, and Astrid hopes to remain part of the Christopher House community for years to come. For her, Christopher House will always be more than a school or workplace—it's home.



Introducing Christopher House's New Board Chair:

Q&A with Adnan Assad



Christopher House is proud to welcome Adnan Assad as our new Board Chair. As a board member since 2012, Adnan brings more than 25 years of experience in commercial banking, credit risk management, and organizational strategy. As Senior Vice President and Commercial Banking Division Head at Byline Bank, he has led teams through growth and transformation that will help guide Christopher House forward.

A committed community leader, Adnan also serves as Board President of Healthcare Alternative Systems and is a Leadership Greater Chicago Fellow (Class of 2021). His personal experience as an immigrant, and his belief in the power of education and family support, align deeply with Christopher House's mission. We spoke with Adnan about his inspiration, priorities, and vision for the future.

Q. WHAT INSPIRED YOU TO STEP INTO THE ROLE OF BOARD PRESIDENT, AND WHY IS THIS MOMENT MEANINGFUL FOR YOU?

When my family came to this country, we faced language barriers, limited resources, and uncertainty. The support we received from schools and community organizations shaped who I am today. Stepping into this role allows me to pay that forward and help ensure other families receive the care and opportunity that made such a difference in my life.

Q. WHAT ARE YOUR TOP PRIORITIES FOR CHRISTOPHER HOUSE IN THE YEARS AHEAD?

My priorities are rooted in the belief that strong support systems change lives—because I've lived it. I want to strengthen governance and ensure that the Board is aligned with Christopher House's mission. Expanding partnerships and securing resources will be critical to sustaining and growing programs that empower families and help children thrive. I also want to foster collaboration and innovation so that we can adapt to the evolving needs of the communities we serve.

Q. WHAT ASPECTS OF CHRISTOPHER HOUSE'S MISSION RESONATE MOST WITH YOU?

Breaking the cycle of poverty through education and family engagement resonates deeply with me. Christopher House's holistic, two-generation approach—supporting both children and caregivers—creates stability and hope that can transform families for generations.

Q. HOW DO YOU HOPE TO DEEPEN CHRISTOPHER HOUSE'S IMPACT ON CHILDREN AND FAMILIES IN THE COMMUNITIES WE SERVE?

I hope to help Christopher House amplify its reach through collaboration and innovation. By listening to families and understanding their unique challenges, we can ensure programs meet real needs and create lasting change. I also want to leverage partnerships and resources to expand our capacity. When families feel supported, they can overcome incredible obstacles—and I want Christopher House to continue being that source of strength and opportunity.

Q. WHAT MESSAGE WOULD YOU LIKE TO SHARE WITH OUR FAMILIES, PARTNERS, AND SUPPORTERS AS YOU BEGIN THIS NEW CHAPTER?

Thank you for believing in Christopher House and the families we serve. I know firsthand how powerful community support can be. Together, we can continue building brighter futures and stronger communities for generations to come.

AROUND THE HOUSE

Infant and Preschool

serves approximately 300 children from birth through age five, creating joyful, nurturing learning environments where our youngest scholars can grow and thrive. All three of our preschool sites are accredited by the National Association for the Education of Young Children (NAEYC)—a distinction earned by only 10% of early learning programs nationwide—and each has received ExceleRate Illinois' highest Gold Circle of Quality rating. Across our Infant and Preschool classrooms, learning is rooted in personalized, child-centered experiences paired with immersive family support.

This fall, our early childhood classrooms came alive as scholars celebrated Hispanic Heritage Month through hands-on, meaningful activities. Children explored stories like Alma and How She Got Her Name, danced to Latin music while learning the salsa, created art inspired by Latin American countries, and celebrated the traditions that make Hispanic cultures so rich and vibrant. Families were encouraged to extend the learning at home—listening to music together, trying new recipes, reading as a family, and sharing their own traditions and heritage—strengthening the connection between school, home, and community.



Elementary and Middle School

serves approximately 480 scholars—including graduates of our Infant & Preschool programs—through a personalized, whole-child approach to learning. Scholars benefit from a strong STEAM curriculum, highly qualified educators who receive ongoing professional development, and a college-going culture that prepares every student for long-term success. Thanks to this comprehensive support, our scholars continue to make meaningful progress in critical areas like math and reading as they navigate their post-pandemic learning journeys.

Each fall, students participate in a high school fair featuring a wide range of Chicago schools, including Lane Tech, Loyola, Prosser, Noble Pritzker, and others. This past year, scholars had additional opportunities to tour local high schools such as Noble ITW and Lake View High School, gaining firsthand insight into different learning environments and opportunities. These experiences help students imagine their future, explore the options available to them, and build excitement and confidence as they take the next step in their academic journey—opportunities made possible by the generosity of our supporters.



After School

works with more than 200 scholars—ages six to fourteen—including our Elementary School students and program graduates. Through year-round programming, scholars are encouraged to explore new interests, strengthen academic skills, and build healthy habits and essential soft skills that support success in school, at home, in college, and in future careers. During the school year, programming runs from 2:30–5:30 p.m., with full-day enrichment offered on non-school days. Each afternoon is thoughtfully designed to blend academic support, social-emotional learning, and hands-on community exploration—creating a safe, engaging space for scholars to learn and grow beyond the classroom.

This past summer, scholars dove into hands-on physics exploration that sparked curiosity and confidence in STEM learning. Students investigated a variety of scales—such as balance scales, bucket scales, food and mail scales, and bathroom scales—to understand measurement, weight, and comparison. They also experimented with pulleys, ramps, and levers, including building catapults, to explore how forces and motion work in the real world. These interactive activities do more than teach scientific concepts; they make learning tangible, fun, and relevant, especially during the critical after-school hours. By engaging scholars in experiential STEM learning early and often, we help nurture problem-solving skills, creativity, and a love of discovery—preparing them not just for the next grade, but for a lifetime of learning and opportunity.



Parent School

partners with every parent and caregiver—serving families across our Infant & Preschool, Elementary School, and After School programs—to help create stable, healthy home environments that support children's academic and social-emotional growth. Parent School works with families year-round, offering holistic supports such as dedicated family advocates, parent education workshops, counseling services, and essential resources including on-site food pantries and emergency financial assistance. By strengthening families as a whole, we help ensure scholars are set up to thrive both in and out of the classroom.

Each holiday season, Christopher House and our generous donors come together to provide an extra layer of care through our Family-to-Family Holiday Giving Program. This deeply personal initiative matches more than 450 families with donors who fulfill individualized holiday wish lists—providing items like winter coats, athletic gear, and children's books to build home libraries. Beyond meeting material needs, Family-to-Family fosters dignity, connection, and a sense of belonging, reminding families that they are seen, supported, and valued by their community. Because of our donors, hundreds of families experience the joy and warmth of the holidays without added financial stress.



Announcing a New Community Partnership Concordia Place

We are excited to share that Christopher House is entering into a new partnership with Concordia Place, expanding our ability to deliver high-quality early learning and family support to more children across Chicago. Through this collaboration, Christopher House will work alongside Concordia Place to provide comprehensive Head Start services for enrolled children and their families—building on our shared commitment to early education, family engagement, and community-based care.

In addition to this partnership, Concordia Place will also be joining the Chicago Benchmarking Collaborative (CBC) as its seventh member. Managed by Christopher House, the CBC brings together early childhood and youth-serving organizations to strengthen outcomes through shared data, learning, and best practices. Concordia Place's participation will further deepen the collaborative's collective knowledge, amplify community voices, and enhance our ability to identify and scale what works for children and families across the city.

"We are thrilled to partner with Christopher House to offer Head Start programming at Concordia Place," shared Grace Araya, Concordia Place President and Chief Executive Officer. *"This collaboration reflects our shared commitment to early childhood education and family support. By working together, we can strengthen our community and ensure that more children and their families have access to the high-quality resources and opportunities they deserve. This partnership is an important step toward building brighter futures for our youngest learners."*

With the support of our donors, this partnership and expanded collaboration allows Christopher House to reach more families, invest in trusted community organizations, and continue building a stronger, more equitable early learning system—one neighborhood at a time.



A Seat at the Table Scholars Leading Community Conversations

This year, Christopher House launched a new community-centered initiative designed to elevate scholar voices and deepen community connection: Lunch and Learns with Student Leadership. These interactive experiences invite community leaders and partners into our schools to tour the space, share a meal, and engage in meaningful dialogue with our Middle School student leadership. Students share their Christopher House experience and participate in thoughtful conversations—asking questions, sharing perspectives, and learning firsthand how leadership and advocacy shape the world around them.

Scholars hosted two Chicago Public Schools Board members, Michilla Blaise and Ed Bannon. During the conversation, students asked questions about the representatives' roles, their personal career journeys, and the importance of public policy and advocacy in shaping strong school communities. Blaise shared an especially powerful message with scholars:

"Schools are continuously evolving and moving forward—it's a fluid process. How they deal with bullying, mental health, food—it has all changed since I was in school, and that's because someone was advocating for that change. That's what public policy really is—you are helping bring whatever change you are dreaming of to life."

Fourteen-year-old Axel, a Christopher House scholar since early childhood shared that he was excited to participate because, *"I like getting my voice out there and I like helping people. I'm very passionate about Christopher House and getting to learn more about community leaders while sharing about my school seemed like too good of an opportunity to pass up."*

Axel was particularly inspired to hear about a potential high school internship opportunities with the CPS Board and was moved by the discussion of how real change happens—from idea to action. Reflecting on the experience, he described the Lunch and Learn as a "mutual learning opportunity" for both students and guests and shared that he looks forward to participating again—not only to represent his school, but to learn more about the possibilities ahead.

Through initiatives like Lunch and Learns, Christopher House continues to create spaces where scholars build confidence, practice leadership, and connect their education to real-world impact, preparing them to be engaged, informed, and empowered changemakers.



Alumni Spotlight

Eddie Oppong: A Home Away from Home

Eddie Oppong's Christopher House story began in early childhood and continued through our After School program—years that helped shape not only who he is today, but how he sees the world. Reflecting on his time at Christopher House, Eddie shared that those early experiences sparked his curiosity and love of learning.

"It shaped me as a student eager to learn more about my talents and appreciation of life," he said. Through exposure to music, art, food, and creative exploration, Eddie was encouraged to discover what inspired him and to lean into his interests with confidence.

Christopher House also played a meaningful role for Eddie's family. Knowing her son was in a safe, nurturing environment allowed Eddie's mother to go to work with peace of mind. *"Christopher House's amazing support and love made it easier for my mother to go to work knowing I was in good hands,"* Eddie shared. For his family, Christopher House wasn't just a school—it was a trusted partner, reinforcing the same care, values, and guidance he received at home.

One lesson from Christopher House has stayed with Eddie long after graduation: unity. *"Christopher House taught me unity—in making friends and family,"* he reflected. The relationships he built as a child grew into lifelong bonds with people he still considers brothers, sisters, and close friends today. That sense of belonging continues to guide Eddie both personally and professionally, shaping the way he shows up for others and approaches his work.

Today, Eddie is a Chicago-based creative and the founder of YE WO KROM, using fashion and storytelling to share personal journeys—from honoring his Ghanaian heritage to creating BLUE SKIES, a project born from his experience navigating anxiety and depression. Through his work, Eddie continues to spread the values he first learned at Christopher House: love, unity, and authenticity. Looking ahead, his goal remains simple and powerful—to *"continue spreading love and unity for those around me."*

When asked to describe Christopher House in just a few words, Eddie didn't hesitate: *"A home away from home."* His story is a powerful reminder that the support, care, and opportunities provided at Christopher House don't just shape childhood—they ripple forward for a lifetime.



Donors to Christopher House - \$1,000+

July 1, 2025 -
January 31, 2026

INDIVIDUALS

- Anonymous x 2
- Paul Martin and Michelle Arnold
- Gwendolyn and Zeb Barnes
- Anastasia and Harrison Bernbaum
- Joe and Stacey Blasko
- Rick and Dee Dee Chesley
- James and Elyssa Cuber
- Jordan and Debra Hadelman
- John and Judith Harrington
- Lois Hartung
- Robert and Effie Kemerley
- David and Maureen Lai
- Lynn and Mike Lullo
- Steve and Ellen Mardiks
- Roger and Anina McCarron
- Jill Nolte
- Katheryn Peninger
- Elizabeth Press
- Gretchen Rakowicz
- John and Ellen Riggs
- The Rosenmayer Family Fund
- Susan H. Schwartz
- Peter and Barbara Sereda
- Tim Sheehan and Jenny Sheehan
- JoAnne Cicchelli and William Singer
- Suzanne Smart
- Mark and Terri Sullivan
- Diane Svanson
- David Terrinoni
- Rita and Mr. Mark Tresnowski
- Jen and Brian Van Klompenberg
- Carla Varner
- Wayne Wagner
- Marion Walsh
- Jason Weil
- Mary Williams and Mike Lenehan
- Jill Willis

ORGANIZATIONS

- A.G. Cox Charity Trust
- AbbVie
- AXA XL
- Anonymous x 2
- CIBC Bank USA
- Cisco Meraki
- Constellation Energy
- Patrick and Anna M. Cudahy Fund
- Egerter Family Foundation
- Ellis Goodman Family Foundation
- First Presbyterian Church of Arlington Heights
- Andrew and Alice Fischer Charitable Trust
- Franklin Monroe
- Harley-Davidson Financial Services
- IMC Chicago Charitable Foundation
- Peoples Gas
- Presbyterian Church of Barrington
- Presbyterian Women of the Park Ridge Presbyterian Church
- QTS Data Centers
- RBC Capital Markets
- Southminster Presbyterian Church
- Thoma Bravo

From the Boardroom to the Classroom

One Family's Commitment to Service, Community, and Compassion

For Board Member Jessica Cardoni and her family, volunteering with Christopher House is more than giving back—it's a meaningful family tradition that brings their shared values of service, community, and compassion to life.

Since Jessica joined the Christopher House Board in 2019, her entire family has played an active role in the Family-to-Family Holiday Program, helping ensure that families experience joy and dignity during the holiday season. Each year, they shop for wish lists, wrap and organize gifts, and even recruit friends and relatives to join in the effort. What began as a single opportunity to give back has grown into an annual commitment the family looks forward to—one that reinforces the power of generosity and connection.

That spirit of service shines especially brightly in Jessica's daughters, Isabella (16) and Luciana (10), who have each found their own ways to support the Christopher House community.

Isabella recently volunteered in Christopher House's Early Childhood program in Uptown, inspired by her love for young children and her experience babysitting her four younger siblings. Already involved in tutoring elementary students through a school-based program, she saw Christopher House as another meaningful way to make a difference. In the classroom, Isabella valued the opportunity to work

closely with teachers and build connections with the youngest scholars—reflecting on how impactful it felt to support children during a time of uncertainty and funding cuts affecting families across the country.

Luciana, meanwhile, helped lead her Girl Scout troop in sponsoring families through the Family-to-Family program. Together, the girls shopped for wish lists, wrapped gifts, and learned about the families they were supporting. Many chose gifts for children their own age, helping them connect personally to the experience and better understand the impact of their kindness. The project was so meaningful that the troop asked to make Family-to-Family an annual tradition.

For Jessica, watching her daughters engage so thoughtfully has been deeply rewarding. *"This has become one of my favorite parts of the holiday season,"* she shared. *"It's something we do together as a family, and it shows our kids that helping other kids really matters."*

From Board leadership to hands-on volunteering, this family's story reflects the heart of Christopher House—bringing people together to support children and families, today and for generations to come.





Honoring Heritage, Inspiring the Future

A Reflection for Hispanic Heritage Month

In celebration of Hispanic Heritage Month 2025, Christopher House welcomed Dani Dominguez, founder of Semillas Strategies and an equity and inclusion practitioner, to lead a virtual forum for staff. Dani, an Indigenous Latine and nonbinary practitioner with over 15 years of experience, shared a powerful message about the importance of heritage, resilience, and community in education.

Drawing from their own experiences growing up near the U.S.-Mexico border, Dani highlighted the duality of cultural pride and the challenges faced by Latinx communities. *“Heritage isn’t only about celebration,”* Dani said. *“It is also about resistance, resilience, and building community together. Whether your roots stretch to Puerto Rico, Mexico, Mississippi, or right here in Chicago, our stories are woven together into a collective heritage.”*

Throughout the session, Dani emphasized the critical role educators, administrators, and staff play in shaping the next generation. Every classroom, every mural, and every program is an opportunity to create belonging, model love, and teach freedom. *“When you teach a child to write their name as their family intended, when you bring art and music into the classroom, when you celebrate culture alongside academics, you’re shaping future ancestors,”* Dani explained.

Dani also reflected on the power of imagination and dreaming as acts of creation and resistance. *“Nothing happens in the real world unless it first happens as an image in our heads. That’s why imagination matters—the way we dream determines the way we build. Schools are where those dreams take root,”* they shared. By fostering creativity, curiosity, and cultural pride in students, educators help young people envision a future where they belong, are valued, and can contribute meaningfully to their communities.

Participants were guided through reflective exercises on presence, solidarity, and the ways they carry their own heritage into daily work. Dani reminded staff that celebrating Hispanic Heritage Month is not just about remembering the past—it is about creating and protecting culture, fostering belonging, and inspiring future generations. As Dani shared, “Heritage is not what we keep—it is what we create together. It’s in the hands that teach, the hearts that listen, the community that refuses to give up on one another.”

Staff left the session with renewed perspective on the role of culture in learning, feeling both grounded and inspired to continue building inclusive, joyful, and courageous spaces for students and families. Dani’s talk was a reminder that honoring heritage is also an act of hope, love, and commitment to justice—for today and for the generations to come.



SNHA Chooses Christopher House as Beneficiary for QTS Soar Higher Award

Christopher House is proud to announce a generous grant awarded through SNHA, a Woolpert Company, in recognition of their selection as QTS’s Design Partner of the Year. QTS, a global data center development company, honors partners who demonstrate excellence, growth, and community engagement through its Soar Higher program, which features five award categories. SNHA chose Christopher House as the recipient of their award because of the meaningful impact we have on children and families in the Chicago community.

For SNHA, being recognized as QTS’s Design Partner of the Year is not only a professional honor—it’s also an opportunity to give back to the communities that support their team.

“The SNHA team is successful because of the communities that support our team members,” said representatives from SNHA. *“This award is a way to acknowledge and support those communities directly.”*

Christopher House stood out to SNHA because of our two-generation approach, which supports both children and their families. From family advocates and counseling services to parent workshops, food pantries, and emergency rental assistance, Christopher House meets families where they are and addresses real, everyday challenges. *“It was clear to us that Christopher House thoughtfully supports children while also strengthening the family environment—this aligns perfectly with our team’s values,”* SNHA shared.

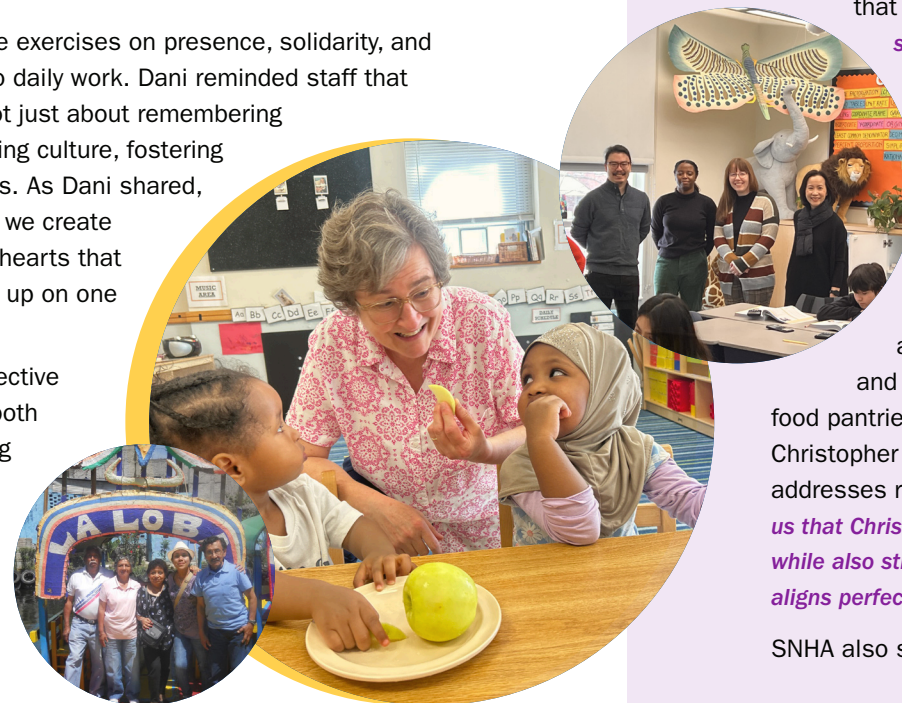
SNHA also sees a strong connection between their own

commitment to community engagement and the work we do. While SNHA often focuses on teaching students about architecture, design, and mission-critical systems, Christopher House complements that work by providing stability and care from the earliest years. By supporting both caregivers and children, our programs help create healthier, more secure home environments, laying the foundation for long-term success.

This investment will provide practical support where it is needed most. SNHA hopes the grant will help Christopher House continue providing critical services, whether that means keeping food pantries stocked, supporting family advocates, or assisting families during times of housing or financial instability. *“We trust these funds will make an immediate and meaningful difference for the people who rely on them most,”* SNHA said.

Local organizations like Christopher House play a vital role in building strong, resilient communities. *“Neighbors helping neighbors goes a long way to building resilience and a sense of place for residents,”* SNHA noted. They encourage other corporate partners to recognize the impact of community-based nonprofits, emphasizing that supporting organizations like Christopher House means investing in real relationships and real needs—work that transforms communities from the ground up.

Christopher House is deeply grateful to SNHA and QTS for this support, which ensures that our programs continue to provide children and families with the resources, care, and stability they need to thrive.



05.01.26 | VENUE WEST | 6PM

“The Power of One Story, The Strength of Many”

ONCE
UPON A TIME GALA

CHRISTOPHER
HOUSE



5235 W BELDEN AVE
CHICAGO, IL 60639

CHRISTOPHER
HOUSE